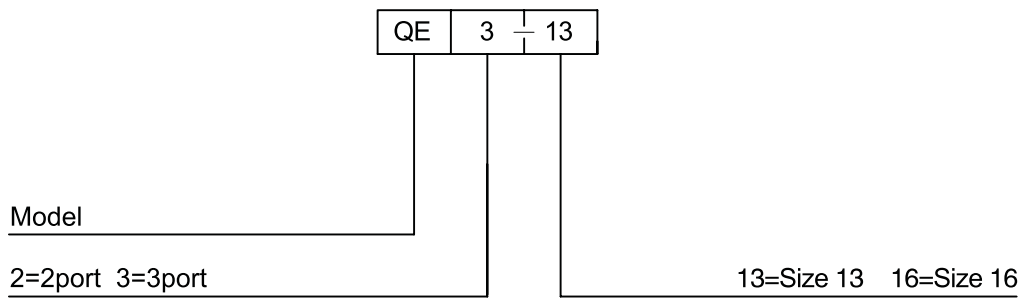
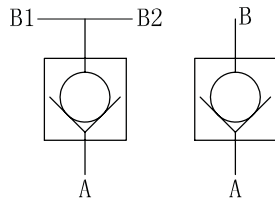
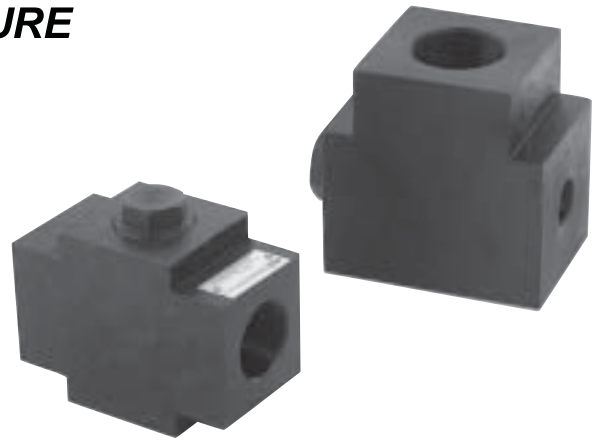
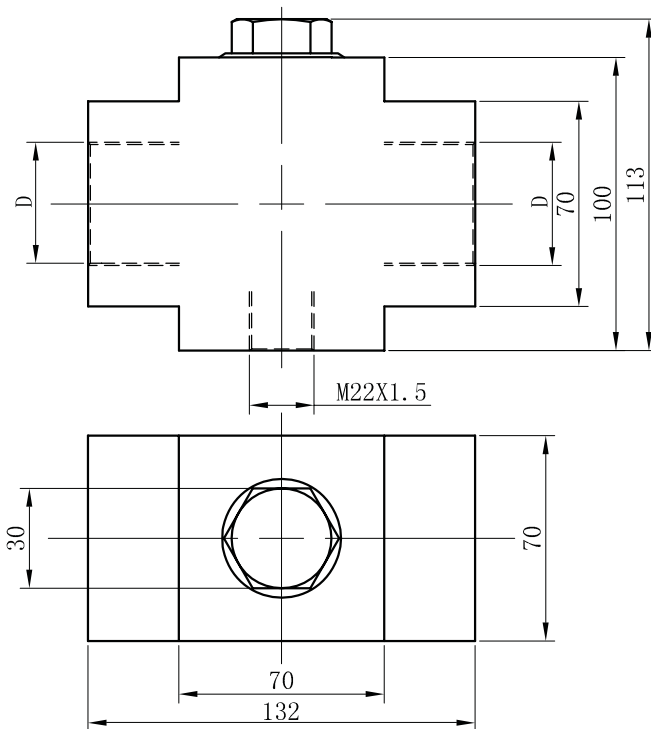


## ▶ QE-13 SERIES HYPERPRESSURE CHECK VALVES

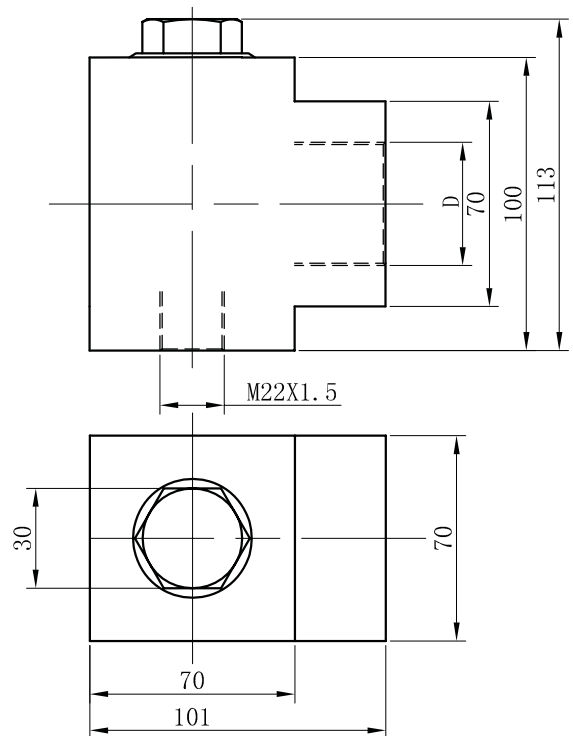
QE-13 series is used in hyperpressure Occasion. It allows free flow in one direction and block flow in the counter direction. Max.pressure: 150MPa; Max. flow rate:150L/min.



### ▶ QE3 Installation Dimensions



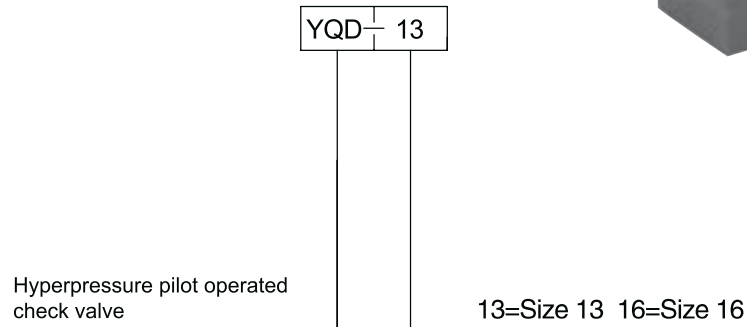
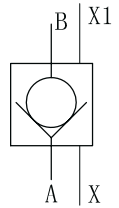
### ▶ QE2 Installation Dimensions



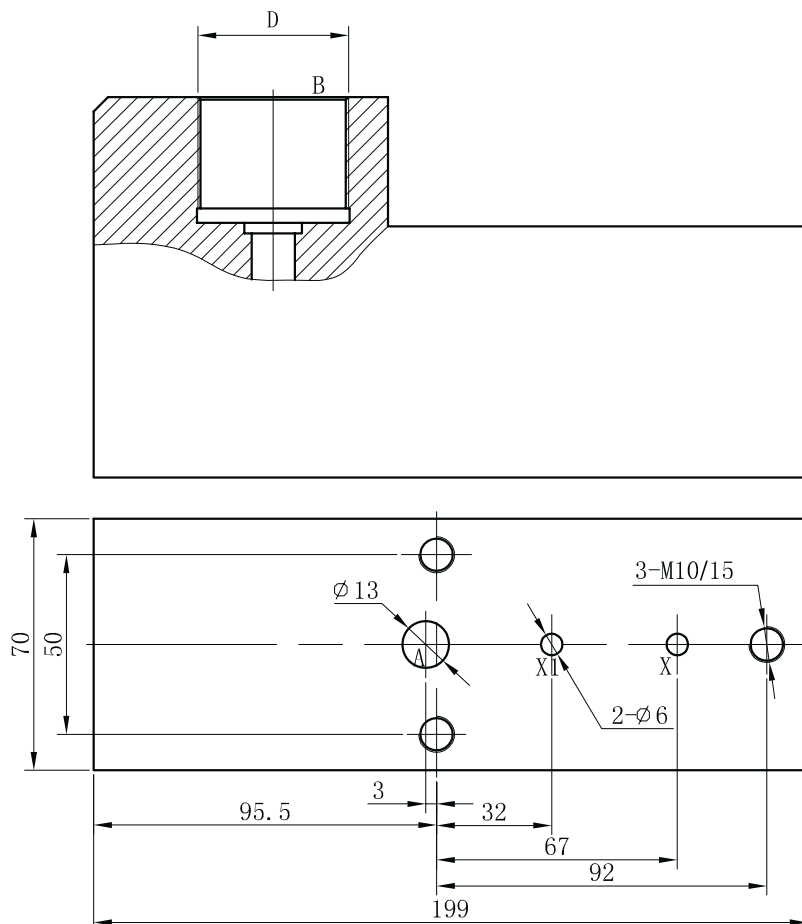
Size	D
13	M42X1.5
16	M48X1.5

## ▶ YQD-13 SERIES HYPERPRESSURE PILOT OPERATED CHECK VALVES

YQD series hyperpressure pilot operated check valves allow high pressure oil free flow in one direction and block in the counter direction ,it can be used to maintain pressure in hyperpressure systems,The high pressure oil is also free flow in the counter direction when the pilot connected ,It is available for diamond pressing machine and some hyperpressure system with Max. pressure of 250MPa , flow up to 60L/min.



### ▶ YQD Installation Dimensions



Size	D
13	M42X1.5
16	M48X1.5

## ▶ **YQ-45 SERIES HYDRAULICALLY HYPERPRESSURE SEVEN-WAY VALVES**

YQ series hydraulically hyperpressure seven-way valves equipped in high pressure power unit, are designed to control six oil circuits open or close through one supplying line by pilot oil.

It is available for diamond pressing machine and other hyperpressure system with Max. pressure of 250 MPa, flow up to 120L/min.

