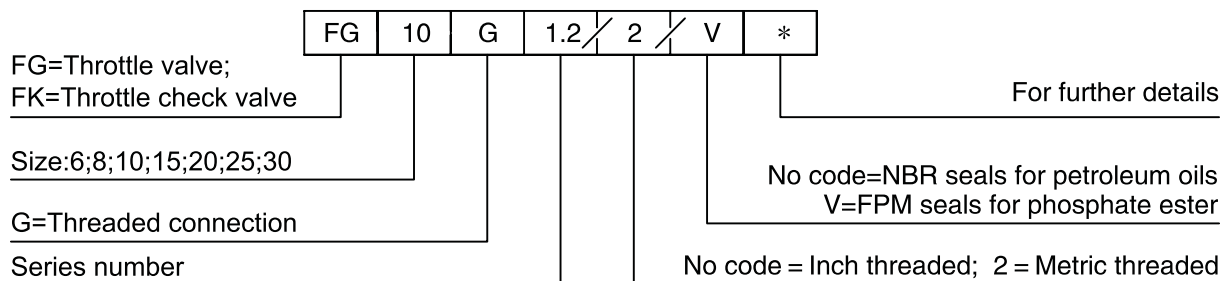
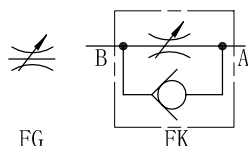


## FG THROTTLE VALVES/FK THROTTLE CHECK VALVES

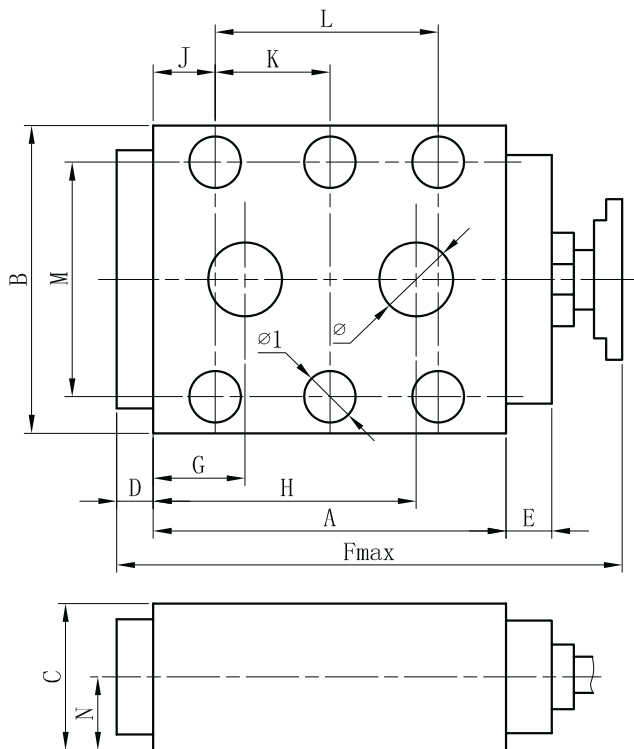
FG/FK series throttle/throttle check valves mounted on the oil pipe lines di-rectly.FG throttle valve is used to regulate flow by turning adjustment sleeve.FK throttle check valve is used to control flow in one direction and allow free flow in the opposite.



### Technical data

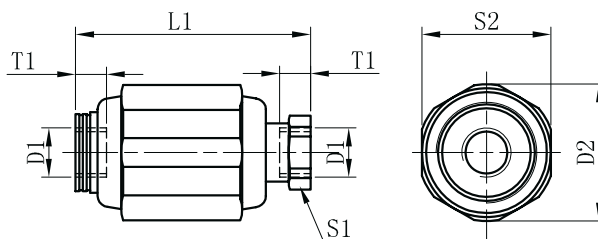
Size	6	8	10	15	20	25	30
Operating pressure(Mpa)	31.5	31.5	31.5	31.5	31.5	31.5	31.5
Flow rate(L/min)	15	30	50	125	200	300	400
Inch	G1/4"	G3/8"	G1/2"	G3/4"	G1"	G1 1/4"	G1 1/2"
Metric	M14 × 1.5	M18 × 1.5	M22 × 1.5	M27 × 2	M33 × 2	M42 × 2	M48 × 2
Cracking pressure of check valve	0.05MPa						

FK\*P Subplate mounting



Size	A	B	C	D	E	Fmax	G	H	J	L	M	K	Φ	Φ 1
10	110	84	50	10	25	190	39	69	29	40	64	—	2-Φ10	4-Φ11
20	140	104	70	10	33	229	94	94	34	72	76	—	2-Φ20	4-Φ13
30	185	148	95	20	40	295	124	124	35	112	116	56	2-Φ30	6-Φ13

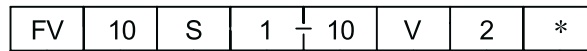
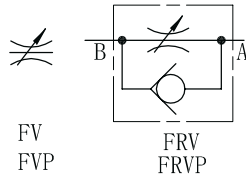
FG Drawing



Size	D1		D2	L1	S1	S2	T1	Weight(kg)
	Metric	Inch						
6	M14X1.5	G1/4"	34	65	22	32	12	0.3
8	M18X1.5	G3/8"	38	65	24	36	12	0.4
10	M22X1.5	G1/2"	48	80	30	46	14	0.7
15	M27X2	G3/4"	58	100	41	55	16	1.1
20	M33X2	G1"	72	110	46	70	18	1.9
25	M42X2	G1 1/4"	87	130	55	85	20	3.2
30	M48X2	G1 1/2"	93	150	60	90	22	4.1

## FV/FRV SERIES THROTTLE VALVES/THROTTLE CHECK VALVES

FV/FRV; FVP/FRVP series throttle check valves are used to regulate the speed of actuators simply and precisely.



FV=Throttle shut-off valve  
FRV=Throttle check shut-off valve  
FVP=Subplate type throttle shut-off valve  
FRVP= Subplate type throttle check shut-off valve

Size:6,10,12,16,20,25,30,40

No code=Threaded connection  
S=Subplate mounting

1=Steel;2=Brass;3=Stainless steel

For further details  
No code=Inch thread;  
2=Metric

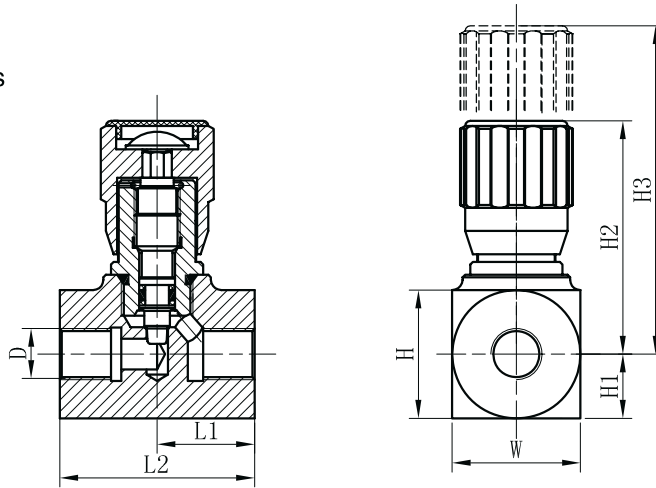
No code=NBR seals for petroleum oils  
V=FPM seals for phosphate ester

Series number

### Technical data

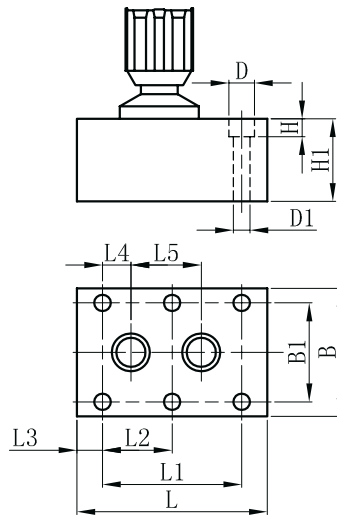
Size	6	8	10	12	16	20	25	30	40
Operating pressure(Mpa )	35	35	35	35	35	35	35	35	35
Flow rate(L/min)	16	24	35	45	60	100	150	210	375
FV,FRV(Inch)	G1/8"	G1/4"	G3/8"	G1/2"	G3/4"	G1"	G1 1/4"	G1 1/2"	G2"
FV,FRV(Metric)	M10X1	M14X1.5	M18X1.5	M22X1.5	M27X2	M33X2	M42X2	M48X2	M60X2
Opening pressure for check valve	0.05MPa								
Pipeline type panel connection	M16X1.5	M18X1.5	M18X1.5	M22X1.5	M22X1.5	M33X2	M33X2	M33X2	M33X2

► FV/FRV Unit Dimensions



Size	D		WXH	H1	H2	H3	L1		L2	
							FV	FRV	FV	FRV
6	G1/8"	M10X1	16X16	8	50	55	19	26	38	45
8	G1/4"	M14X1.5	33X28	12.5	69.5	76.5	32.5	40	63.5	63.5
10	G3/8"	M18X1.5	35X37	16	82	89	32.5	41	65	70
12	G1/2"	M22X1.5	35X37	17.5	84	94	44	44	73	73
16	G3/4"	M27X2	45X50	22.5	91	101	44	57	88	88
20	G1"	M33X2	56X56	26	129	146	49	78	98	127
25	G1 1/4"	M42X2	63X63	30	135	152	54	91	108	143
30	G1 1/2"	M48X2	73X73	35	140	157	54	91	108	143

► FVP/FRVP Unit Dimensions

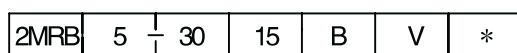
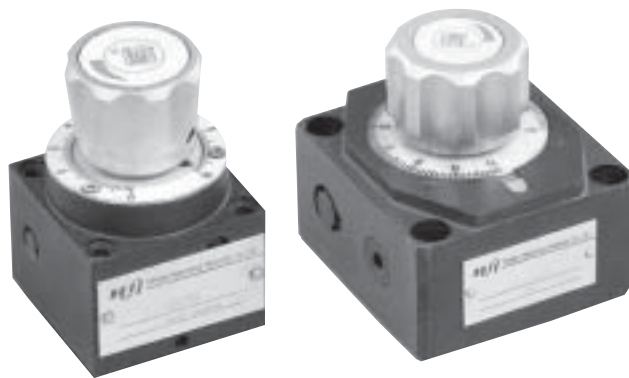
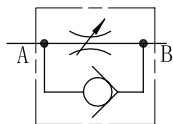


Model	D	D1	H	H1	L	L1	L2	L3	L4	L5
FVP6	11	6.6	8	20	35	19	/	6.4	1.6	16
FVP8	11	6.6	8	20	47.5	35	/	14.2	4.5	25.5
FVP10	11	6.6	8	25	70	33.5	/	18	4	25.5
FVP12	11	6.6	8	25	75	38	/	18.5	4	30
FVP16	14	9	8	45	104	76	38	14	11.4	54.5
FVP20	14	9	11	50	127	95	47.5	16	19	57
FVP25	17	11	13	50	145	120.5	60	11	21	79.5
FVP30	19	13	13	75	186	143	71.5	15	23.8	95

Notes: FRVP'S Unit Dimensions are same with FVP

## 2MRB SERIES FLOWS CONTROL VALVES

2MRB series flow control valves are restrictive style flow regulators, without affected by pressure and temperature.

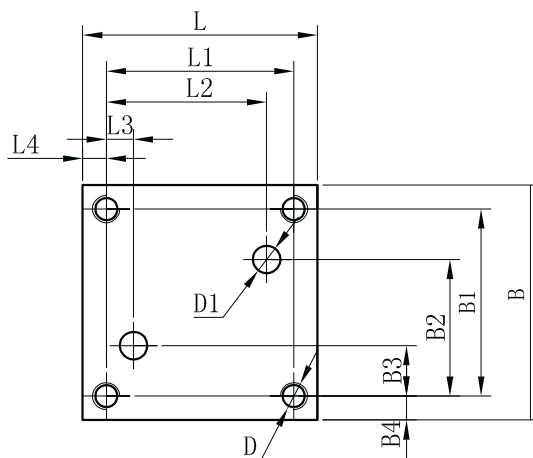


Model	2MRB	5	1/30	15	B	V	*	For further details
Size:5;10;16								No code=NBR seals for petroleum oils V=FPM seals for phosphate ester
Series number								No code=Without pressure compensating locator B=With pressure compensating locator
30=Size5;20=Size10;50=Size16;								
See the form below for flow rate (directionA-B)								

### Technical data

Size	5							10				16		
Max.flow rate(A – B)(L/min)	0.2	0.6	1.2	3	6	10	15	10	16	25	50	60	100	160
ΔP Value(B–A)(Mpa)	0.05	0.05	0.06	0.09	0.18	0.36	0.67	0.2	0.25	0.35	0.6	0.28	0.43	0.73
Operating pressure(Mpa)	21							31.5				31.5		
Min.pressure loss	0.3–0.5							0.3–0.7				0.5–1.2		
Filtering to prolong service life(μm)	25 ( Q<5L/min);10(Q<0.5L/min )													

### 2MRB Subplate Installation Dimensions

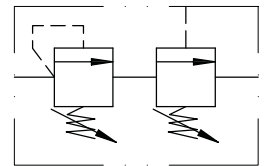
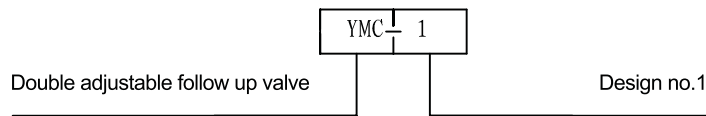
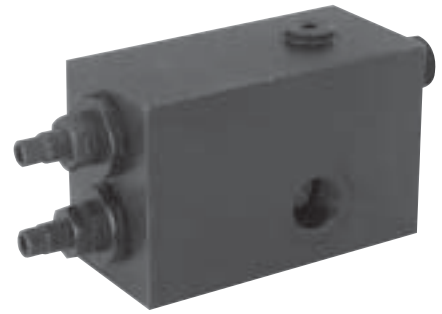


Model	B	B1	B2	B3	B4	L	L1	L2	L3	L4	D	D1
2MRB5	60	48	35	13	6	60	48	41	7	6	4-M5	2-Φ5
2MRB10	101.5	82.5	71.6	30.1	95	95	76	55.1	9.6	8.5	4-M8	2-Φ10
2MRB16	123.5	101.5	90.5	15	11	123.5	101.5	75	20.5	11	4-M10	2-Φ16



## ▶ YMC-1 FOLLOWUP ADJUSTABLE VALVES

YMC-1 series followup adjustable valves are used to control the tangle of linear object, for example , the valve maintains the linearly tension consistency of lines being wound on or let out from a reel and balance the linear velocity of both rotary mechanisms installed on the different terminals, so that to prevent linear object from breaking and entangling when the rotary mechanisms at different ends start running, or from twisting on the wheels when stopped simultaneously. It is the better choice for equipments with linear movement. The Max operation pressure of the valve is 250Mpa, flow up to 120L/min,with threaded connections ,it may be specified if sub-plate mounting needed.



### ▶ YMC Operating drawing

